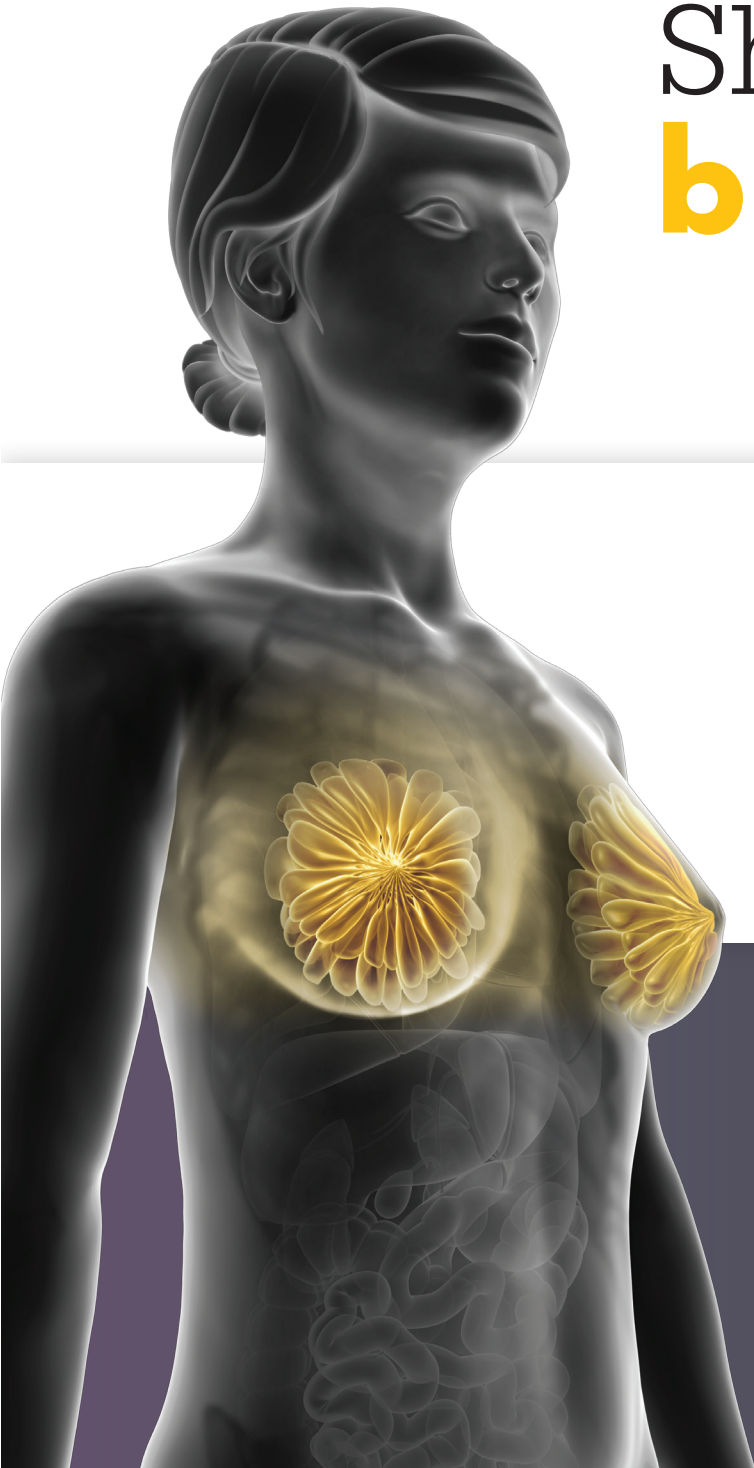
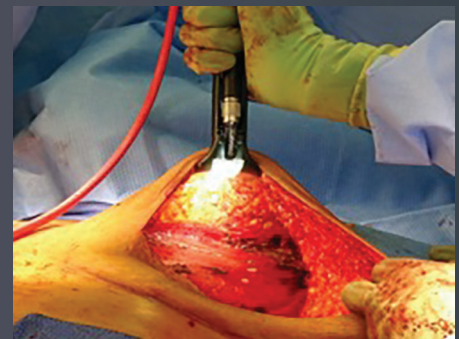


Shaping a **bright future**



Illuminated
Instruments for
**plastic and
reconstructive
surgery**



Restoring shape and hope

Our Illuminated Instruments enable greater visualization, ability and precision during breast reconstruction. The impact is equally beneficial for your patients, providing life-changing results with high satisfaction and minimal trace of surgery.

Common applications include:

- + Breast reconstruction; including immediate or delayed, biologic or implant based, and pre- or sub-pectoral
 - Placement of tissue expander
 - Exchange of tissue expander to implant
 - Direct to implant
 - Autologous reconstruction/flaps (TRAM, DIEP)
- + Revisions, capsulectomies/exchanges
- + Augmentation/reduction procedures



Illuminated Retractor System: for broad illumination

Eikon LT

- + Bright, thermally-cool light and non-conductive material protect against thermal hazards
- + Volumetric spread provides even intracavity lighting without washing out tissue color
- + Microlenses shape light to reduce shadows or backward glare
- + Ergonomic, low-profile design for use in deep cavities or through small incisions
- + Elevated tip and smooth edges enable movement and minimize pressure
- + Ultra-lightweight design
- + 45+ reusable styles
- + Compatible with commercially available light sources with ACMI connection, LED recommended

Eikon LT Adapt SE

All the same benefits as Eikon LT plus:

- + Smoke evacuation at the surgical site
- + Adjustable illumination anywhere along entire retractor length

Deaver

All the same benefits as Eikon LT plus:

- + "Question mark" shape to retract, expose and hold back tissue, muscle and organs
- + Adjustable illumination anywhere along entire retractor length
- + Used with flexible PhotonGuide Adapt illuminators



Eikon LT



Eikon LT Adapt SE



Deaver

PhotonGuide

- + Narrow and wide styles
- + For single use with Eikon LT retractors

PhotonGuide Adapt

- + Adjustable illumination anywhere along entire retractor length
- + Slide to adjust throughout your case
- + Can be removed and reinserted into other Adapt retractors perioperatively
- + For single use with Adapt-style retractors



PhotonGuide and Adapt

Energy options: for soft tissue dissection

PhotonBlade advanced energy with integrated illumination

- + Lowest thermal spread among top competitors¹⁻²
- + Insulated tip and precise active edge for dissection at lower temperatures
- + Circumferential illumination remains 2cm from tip
- + Continuous use in wet fields
- + COAG "spray mode" for increased bleeding control
- + 2"-5" telescoping, rotatable tip eliminates need to exchange electrode tip lengths
- + Access to a wide variety of settings/modes across a range of full-featured, monopolar ESUs
- + Smoke evacuation attachment available

SafeAir electrosurgical smoke pencil

- + CUT/COAG for less challenging cases (simple/radical mastectomy, simple lumpectomy)
- + "On-tip" integrated smoke evacuation
- + Compatible with commercially available monopolar ESUs



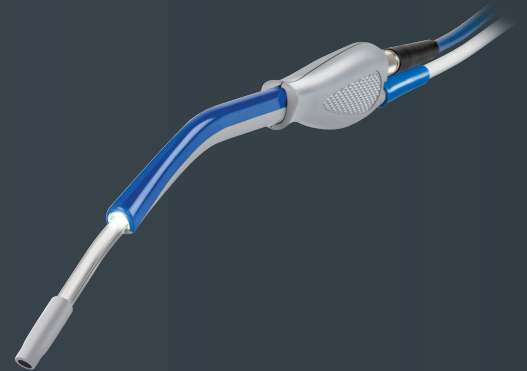
PhotonBlade

SafeAir electrosurgical smoke pencil

Multi-tasking aspirator: enhances efficiency

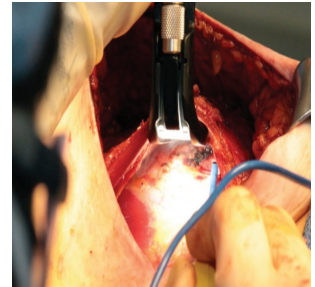
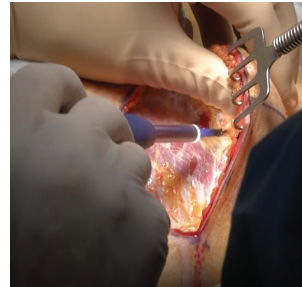
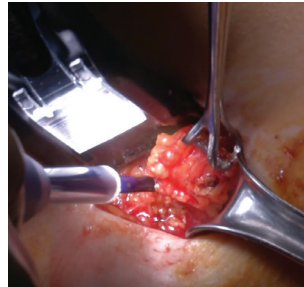
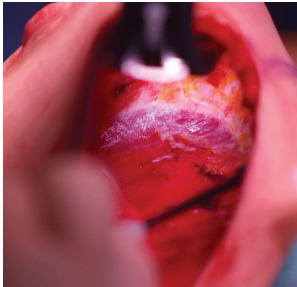
PhotonSaber Y

- + Aspirates fluid, retracts soft tissue, evacuates smoke and provides bright, thermally-cool illumination
- + Low-profile design for use in deep cavities or through small incisions
- + Metal and bulb tip styles, as well as standard or pistol grip



Reconstruct what's possible

- + Access any quadrant of the breast through remote incisions
- + See clearly in deep spaces such as breast, axillary, or pectoral cavities containing messy or unknown challenges
- + Differentiate tissue planes to harvest flap with greater precision, efficiency and safety
- + Assess flap thickness via trans-illumination to help gauge flap and nipple integrity
- + Reduce risk of skin or nipple necrosis due to low thermal spread and high precision
- + Work gently on radiated tissue
- + Spot bleeders that can lead to post-op hematoma or re-operation
- + Using advanced energy and lower settings, work around the pectoralis muscle with reduced potential for muscle activation
- + See surgical sponges or other items that could result in retained objects
- + In many cases, use single-incision approaches to perform complex procedures
- + Reduce cost and logistical stress associated with proprietary equipment
- + Work more comfortably, without head lights or constant adjustments to overhead lights



“Being modifiable makes it better. I can adjust the light to exactly where I need it depending on the depth of my dissection. Sometimes the light is too close to the tissue with a tebbetts retractor and can wash out the tissue, which affects the quality of my visualization. I chose to use the Eikon line because the retractor is designed for breast procedures and is gentle on the tissue due to the rounded shape and smooth edges.”

Will Schleicher, MD
Plastic and Reconstructive Surgery
University Hospitals, Cleveland

“The technology enables me to control bleeding by identifying perforators on the chest wall and accurately cauterize these vessels under direct visualization.”

Abhishek Chatterjee, MD, MBA
Chief, Division of Plastic Surgery
Tufts Medical Center

Your complete solution

To demo or learn more about our Illuminated Instruments and Hidden Scar breast reconstruction program call your Surgical Technologies sales representative or 800 253 3210. You may also visit stryker.com/surgical.

Supporting patients and your practice

Hidden Scar breast reconstruction can help attract patients searching for less invasive treatment solutions.

Our Hidden Scar program can help hone your expertise and generate awareness in your community. Program resources include:

Surgeon certificate of training

- + Educational opportunities and surgical skills training labs
- + Inclusion on Surgeon Finder and designation as a Hidden Scar Surgeon

Patient education and awareness

- + Raising patient awareness through digital marketing to create brand awareness around Hidden Scar surgery

Hospital marketing program

- + Hidden Scar Center and System of Excellence designations
- + Marketing templates for your hospital program

Surgical Technologies

Stryker or its affiliated entities own, use, or have applied for the following trademarks or service marks: Eikon, Hidden Scar, Intelligent Photonics, PhotonBlade, PhotonGuide, PhotonSaber, Stryker and Visionary Surgery. All other trademarks are trademarks of their respective owners or holders.

The absence of a product, feature, or service name, or logo from this list does not constitute a waiver of Stryker's trademark or other intellectual property rights concerning that name or logo.

D0000015933 Rev. AA
G55/PS
Copyright © 2019 Stryker
Printed in USA

Product Number	Description
Deaver illuminated retractors	
A25D	25mm x 133mm
A38D	38mm x 134mm
Eikon LT illuminated retractors (without teeth) Heaney style	
C40XN	40mm x 12mm, extra narrow
C40N	40mm x 20mm, narrow
C50	50mm x 30mm
C90N	90mm x 20mm, narrow
C90	90mm x 30mm
C90W	90mm x 60mm, wide
C135N	135mm x 20mm, narrow
C135	135mm x 30mm
C135W	135mm x 60mm, wide
C135SH	135mm x 60mm, sweetheart
C175	175mm x 30mm
Eikon LT illuminated retractors (with teeth) Heaney style	
C50T	50mm x 30mm
C90NT	90mm x 20mm, narrow
C90T	90mm x 30mm
C90WT	90mm x 60mm, wide
C135NT	135mm x 20mm, narrow
C135T	135mm x 30mm
C135WT	135mm x 60mm, wide
C175T	175mm x 30mm
Eikon LT Adapt SE illuminated retractors (without teeth, 2 slats) Tebbetts style	
A90SE	90mm x 30mm
A90WSE	90mm x 60mm, wide
A135SE	135mm x 30mm
A135WSE	135mm x 60mm, wide
A155SE	155mm x 30mm
A155WSE	155mm x 60mm, wide
A175SE	175mm x 30mm
A175WSE	175mm x 60mm, wide
Eikon LT Adapt SE illuminated retractors (with teeth, 2 slats) Tebbetts style	
A90TSE	90mm x 30mm
A90WTSE	90mm x 60mm, wide
A135TSE	135mm x 30mm
A135WTSE	135mm x 60mm, wide
A155TSE	155mm x 30mm
A155WTSE	155mm x 60mm, wide
A175TSE	175mm x 30mm
A175WTSE	175mm x 60mm, wide

Product Number	Description
PhotonGuide illuminators (single use)	
104008	Narrow
104015	Wide
PGA1	Adapt
PhotonSaber Y (Yankauer style) sterile, single use device; includes optional pistol grip	
ES1Y	Bulb tip
ES3Y	Taper tip
ES4Y	Metal tip
Retractor accessories	
FC1S	Single fiber optic cable, blue; 10ft, ACMI
FC1SP	Single fiber optic cable, pink; 10ft, ACMI
FC1B	Bifurcated fiber optic cable; 11.5 ft, ACMI
ST2B	Two-level sterilization tray; 14in x 10in x 5.2in
ST1C	Single-level sterilization tray; 14in x 10in x 3.2in
SafeAir Telescopic Smoke Evacuation Pencil - push button switch	
0703-046-004	Coated 70mm blade
0703-046-005	Uncoated 70mm blade
0703-046-006	Coated 70mm blade, non-sterile*
0703-046-007	Uncoated 70mm blade, non-sterile*
SafeAir Telescopic Smoke Evacuation Pencil - rocker switch	
0703-047-004	Coated 70mm blade
0703-047-005	Uncoated 70mm blade
0703-047-006	Coated 70mm blade, non-sterile*
0703-047-007	Uncoated 70mm blade, non-sterile*
PhotonBlade	
PB1	With holster
PB1SE	Smoke evac (10 pack)

Retractors and associated slats are non-sterile, reusable instruments. Slats are not interchangeable. Each retractor includes 2 reusable slats.

* Non-sterile options for procedure packs available through distributors

1. Bennett, H. et al. "Energy-based Treatment of Tissue and Assessment IX." *SPIE Journal* (2017): 10066
2. Ryan, E. et al. "Comparison of Lateral Penetrating Thermal Tissue Injury Associated with the PhotonBlade and PlasmaBlade 3.0S." *Invuity*

Stryker
1941 Stryker Way
Portage, MI 49002 USA
t: 269 323 7700 f: 800 999 3811
toll free: 800 253 3210
stryker.com/surgical